

  
**ignite**  
Unlocking Potential in the outdoors





1. Who are **Ignite Unlocking Potential?**
2. Our People & Safeguarding
3. Services we offer?
4. Our Home
5. Who we have worked with
6. Forest School Training Overview
7. CPD For Schools
8. Outdoor Education & Skills
9. Residential's
10. Contact details



*"It was organised very well. The leaders were very friendly and gave the children lots of encouragement and support"*



# Who are Ignite Unlocking Potential?

**Ignite Unlocking Potential** aim to raise the quality standard in UK Education with our vision to **enhance** UK teaching and learning practice by mainstreaming international best practice in relation to learning in the outdoors and making this accessible to education and learning institutions.



The **Ignite Unlocking Potential** methodology has been developed over the past 15 years, by the founder Darren Lewis, a qualified teacher and former LEA Education Advisor who has travelled extensively across Scandinavia, Europe, Far East and North America building partnerships with global champions of teaching and learning. Darren is a former director of the Forest School Association (FSA) and Chairs the FSA

South Wales group, the U.K. wide body overseeing Forest School Practice.

In seeing international best practice first hand and undertaking highly specialist training across the globe, we can ensure that we have the internal capability to offer the highest quality training.

It is this commitment to our vision and to developing excellence in all aspects of our practice that has seen **Ignite Unlocking Potential** become a provider of excellence in outdoor learning programmes and training.

We see our work as a privilege not a job; so our network of Outdoor Learning Tutors not only come with teaching and outdoor learning qualifications, they come equipped with a passion to ensure that every child, adult or organisation we engage with gets the **very best levels of engagement, service, expertise and outcomes.**

We created Ignite Unlocking Potential with the purpose... "to inspire and unlock the potential of every child".



# Our People and Safeguarding

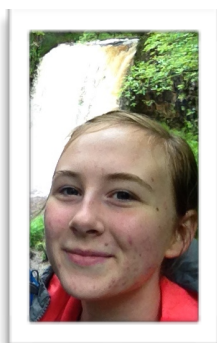
## Our people

**Ignite Unlocking Potential** employ leaders suitably qualified and affiliated with nationally recognised awarding & governing bodies such as the British Mountaineering Council, Mountain Leader Training Wales, CTC, Forest School Association and Grand National Archery Society/ Archery GB.

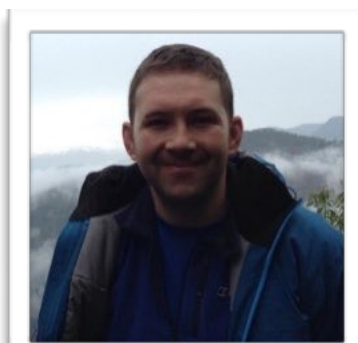
## Safeguarding

Ensuring the safety and wellbeing of the children and young people we work with is of paramount importance to us. **Ignite Unlocking Potential** adhere to the NSPCC First Steps approach to child safeguarding and all programme leaders are subject to an enhanced Disclosure and Baring Service (DBS) check before being able to work with children and young people to deliver our programmes.

All activities undertaken as part of the delivery of our programmes are subject to rigorous risk assessment using HSE guidelines to ensure that risks are identified, recorded and managed effectively.



Sapphire



Darren



Rhys



"Supportiveness...Exciting activities...Good leadership skills...Lasting friendships...Lots of encouragement "



## Services we offer

With a fantastic base at Dare Valley Community Woodlands, Aberdare and a team of passionate Outdoor Tutors we aim to connect everyone with the outdoors by focusing our offerings in 3 distinct areas:

- Sessions & programmes
- CPD & accredited Training
- Residential

### Sessions

- Forest School Sessions (EY& KS2)
- Bike Clubs
- Team and confidence building.
- Dof E & John Muir Award.
- Archery
- Bushcraft
- Outdoor Cookery
- Transition days
- Specialist group projects (ALN, EBD, NEETS)

### Training & CPD

- Forest School Training
- CPD for schools (Early Years and KS2)
- ITC Level 3 in Education and Training (Ptts).
- Food Hygiene L2
- First Aid (L3 EFAW, FAW, Outdoors & Paediatric)
- Child Safeguarding L2
- HLTA
- Conservation & Heritage Skills (L2)
- Keynote & motivational speaking.
- Conferences

### Family/Community

- Holiday Camps (8-13)
- Ladybirds
- Nature Parent & Toddler group
- After School Clubs
- Family Bushcraft sessions
- Family outdoor sessions.
- Residential confidence building.
- Residential wellbeing programmes.

**The above services are not exclusive to each group and can be delivered to any interested party**

**Visit: [www.igniteup.co.uk](http://www.igniteup.co.uk)**



*"My son isn't sporty so this was perfect for him to get active"*



# Our Home

Our training base at Dare Valley Community Woodlands is set in the beautiful surroundings of the Dare Valley Country Park. A 500 acre country park given Northern Valley's Gateway Status by WG is set in the heart of the Cynon Valley.



The Dare Valley Community Woodland is a 9 acre deciduous woodland area which are within 5 minute walking distance of the visitor centre and horse riding centre.

The woodland is managed by a local cooperative venture and is run for the purpose of improving health, wellbeing & educational outcomes for the local area. As a social enterprise and a member of the cooperative we believe in their mission and provide activities and services for its members and the wider public through low impact and environmental responsible projects.

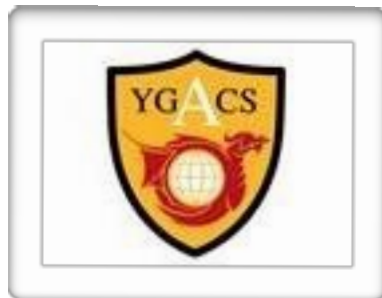


Please see the links for further information on this jewel of the valley, Dare Valley Country Park: <http://igniteup.co.uk/our-home/>

We created Ignite Unlocking Potential with the purpose...  
"to inspire and unlock the potential of every child".



## Who we have worked with



We created Ignite Unlocking Potential with the purpose...  
"to inspire and unlock the potential of every child".

# Forest School Training Overview

**Ignite Unlocking Potential** are a recognised provider of Forest School training and are members of the Forest School Trainers Network, Forest School Association and The Institute of Outdoor Learning (IOL).

We offer a range of accredited and non accredited Forest School program options that can be tailored to specific requirements depending on need. We work with organisations and schools to identify how Forest School can be incorporated into existing provision and can recommend and develop bespoke Forest School programs aligned to specific needs.

Forest School is a proven pedagogical methodology and one which has been adopted extensively throughout Scandinavia where it has become a key element of Early Years provision.

Forest School provides a unique way of creating a child centred learning environment which fosters independence and self esteem in children through involvement in stimulating outdoor learning activities that enhance physical, mental and social development.

## Why train with Ignite Unlocking Potential?

**Ignite Unlocking Potential** embedded the following key features as a result of feedback from customers to provide a unique and unrivalled forest school training offering:

- A world leader in Nature Pedagogy (we even train the Scandinavians!)
- E-learning for theory element (the first provider in the U.K. to offer a blended approach to the delivery of Forest School training)
- Local delivery to make learning relevant to your environment
- Ongoing portfolio and practical support to translate the training into practice
- Combined Level 3 Leader training with 2 day Outdoor First Aid , 1 day outdoor food hygiene and the Claire Warden Floorbook approach.
- Observation at Dare Valley Nature Kindergarten or another Forest School setting.

- Relevant to your needs
- Blended learning approach that avoids delivery being just front loaded
- Knowledge based content delivered via E-Learning reduced cost and time (associated with releasing staff)

*“ The passion for teaching and learning in the outdoors shines through in your Forest School training ”*



# Forest School Introduction: Level 1

‘Wild’ nature, risk and trust – how exciting! In this training event we will be exploring nature based education for children aged from 5 to 11 years offered as a weekly session on a beach, forest, bush, outback or river. This course enables participants to explore how we can integrate Forest School practice into the school curriculum and address practical considerations associated with educating young children outdoors on a regular basis.

## Aims

- To explore the origins, ethos and approach of Forest Schools
- To identify the benefits and learning opportunities offered by ‘wild’ nature
- To introduce some practical bush craft skills and knowledge

## Who is this for:

- Community and parent volunteers
- Level 1 school support staff

**Duration:** 2.5 Days

**Cost:** Per person fee £250

# Forest School Assistant: Level 2

This 3.5 day course leading to the Assistant Forest School leader qualification is ideal for those who would like a more in-depth introductory course or who need more practical experience in order to progress to the Level 3 Forest School Practitioners course.

This course offers plenty of opportunities to develop your own skills at Forest School in preparation for passing those on to others at a later date. Completion of the Level 2 portfolio takes place during the course and whilst assisting a Forest School Practitioner (Level 3 Trained) with planning and delivery of Forest School programmes.

## Aims

- To explore the origins, ethos and approach of Forest Schools
- To identify the benefits and learning opportunities offered by ‘wild’ nature
- To improve practical bush craft skills and knowledge
- To understand and assess the environmental impacts and management of your site

## Who is this for:

- Any individual supporting a Forest School Leader
- School support staff

**Duration:** 3.5 Days

**Cost:** Per person fee £500

*“ Ignite Unlocking Potential tailored the training to my environment and needs”*



## Forest School Leader: Level 3

This course is designed for those who would like to set up and run forest School programmes.

There are five Units of Study at Level 3:

1. *Learning and Development at Forest School*
2. *Forest School Programmes and the Woodland Environment*
3. *Planning a Forest School Programme*
4. *Practical Skills for a Forest School Programme*
5. *Delivery of a Forest School Programme*

Course requirements:

- Attend training days which consist of practical tasks and assessment.
- Learners are required to complete a self-directed assessment portfolio with both practical and written elements (over a 9 month period).
- Attend an appropriate two day First Aid course
- (Run a Forest School Programme of a minimum of 6 sessions in your chosen setting.
- Have a work-based assessment.
- Complete a portfolio for assessment.

**Cost: Per person fee £950**

For further information on Forest School Training please visit  
<http://igniteup.co.uk/forest-school-introduction-level-1/>

We created Ignite Unlocking Potential with the purpose...  
 "to inspire and unlock the potential of every child".





## Forest School an introduction: CPD / INSET

The outdoors is often the most underdeveloped and under-utilised dimension in teaching practice and yet it yields additional and crucially important elements to enhance children's learning by contextualising concepts in a highly experiential way through multi-sensory first hand experiences that cannot be simulated in a traditional classroom environment.

Our series of CPD training courses have been developed from the tutors first hand experiences of International pedagogical practice from across Scandinavia (Denmark, Norway, Sweden & Finland) will equip teaching and learning professionals with a toolkit of practical activities and ideas to enable this to be embedded into their practice immediately.

**Why not start a whole school approach to Forest School with an introductory inset day at just £550!**

*We created Ignite Unlocking Potential with the purpose...  
"to inspire and unlock the potential of every child".*

# Messy Maths (LNF) - Early Years & KS2

## 1. Messy Maths: Early Years & KS2

A Practical Guide to developing mathematical concepts in the outdoors

**“ A brilliant training course and a must for all primary schools”**

**“ Lots of relevant practical activities which I feel confident to teach maths outdoors**

## 2. Messy Maths: 3 Day exploring different curriculum areas

A Practical Guide to developing mathematical concepts in the outdoors

### Aims

- To explore the potential of the outdoor environment to develop mathematical concepts.
- To understand the importance of movement and thinking as linked functions.
- Explore ways to promote higher-order, child-initiated opportunities for mathematical learning
- Discuss the adult role in supporting children's mathematical knowledge and understanding effectively in an outdoor environment.
- Explore ways to provide open ended natural resources to support cognitive development and mathematical reasoning.

### Learning Outcomes

- Review your current mathematical and numeracy practice and implement an action plan to enhance school mathematical practice.
- Identify how the outdoor environment can be used as an additional classroom to enhance school numeracy development.
- Identify new resources and contexts to stimulate mathematical learning in your setting.
- Confidence to implement outdoor learning as a core part of your numeracy practice..

Available in welsh medium

**Duration: 1 Day & 3 Day**

**Cost: £130 & £390**

*“ The passion for teaching and learning in the outdoors shines through in your Forest School training ”*



# Literacy Outdoors (LNF): Early Years & KS2

## 1. Literacy in the Outdoors Early Years & KS2

A Practical Guide to developing literacy in the outdoors

“ The opportunities for writing and oracy are incredible”

“ I have found away to deliver so much cross-curricular content with less planning ”

## 2. Literacy in the Outdoors Early Years & KS2

A Practical Guide to developing literacy in the outdoors- 3 Day exploring different curriculum areas.

### Aims

- To explore the potential of the outdoor environment to develop literacy.
- To understand the importance of movement and language as linked functions.
- Explore ways to promote higher-order, child-initiated opportunities for literacy development.
- Discuss the adult role in supporting children's language development effectively in an outdoor environment.
- Explore ways to provide open ended natural resources to support cognitive development and language development.

### Learning Outcomes

- Review your current practice and implement an action plan to enhance school literacy practice.
- Identify how the outdoor environment can be used as an additional classroom to enhance the whole school approach to achieving the LNF.
- Identify new resources and contexts to stimulate literacy and language development in your setting.
- Confidence to implement outdoor learning as a key part of your practice.

Available in welsh medium

**Duration: 1 Day or 3 Day**

**Cost: £130 & £390**

We created Ignite Unlocking Potential with the purpose...  
“to inspire and unlock the potential of every child”.

# Swedish Early Years Outdoor Pedagogy: Skogsmulle (0-7 years).



**“Wales leads the UK in its development of learning outdoors and the Foundation Phase will further ensure that we are at the vanguard of experiential learning, of which outdoor learning is such a vital element.”**

**Foundation Phase  
Outdoor Learning**

***“Developing International Educational Best Practice right here in the UK”***

If you want to make your early years practice an outstanding feature of your maintained and non-maintained setting, this is a pedagogy that will help you achieve this.

**Ignite Unlocking Potential** are the only organisation in Wales accredited to deliver **Skogsmulle**, an outdoor learning pedagogy developed in Sweden (pronounced skogs-mull-a) which has been adopted extensively throughout Scandinavia, Germany, and Japan.

Skogsmulle is an experiential learning methodology for children aged 3-7 years. Skogsmulle facilitates play focused development by providing learning activities in the outdoors that stimulate children's' imagination to enhance physical, mental and social development. A growing body of academic research has highlighted the need for children to have opportunities to participate in play as a means of building a strong foundation for formal learning later on in life - Skogsmulle is a proven means of

*We created Ignite Unlocking Potential with the purpose...  
“to inspire and unlock the potential of every child”.*



Top 5 Child Welbeing Countries (Unicef 2013)	Inclusion of Skogsmulle in Early Years Education
Netherlands	Yes
<b>Norway</b>	Yes
Iceland	Yes
<b>Finland</b>	Yes
Sweden	Yes

Our 4 day training will lead to the Skogsmulle Leader Diploma; allowing you to practice in the UK. Developed by Magnus and Siw Linde – founders of first Rain or Shine pre-school in Sweden (Mulleborg), the training has been culturally translated by Skogsmulle UK via **Ignite Unlocking Potential** to ensure it meets the requirements of the Foundation Phase curriculum.

Features include:

- Understanding the concept and research
- Understanding Skogsmulle UK and how to embed the concept
- The pedagogy of play come 'Rain or Shine'
- Access to all Skogsmulle materials and resources
- License to practice Skogsmulle and 2 year membership of Skogsmulle UK
- Early notification to international Skogsmulle Conference

**Duration: 4 Days**

**Cost: £450 p/p. Group and cluster booking discounts available.**



We created Ignite Unlocking Potential with the purpose...  
"to inspire and unlock the potential of every child".

# Mindstretchers CPD - Early Years

We are licensed consultants with internationally renowned Educationalist; Claire Warden and Mindstretchers. Approved to deliver Mindstretchers phenomenally successful series of 1 day early year CPD programs:

- Consulting Children: Talking and thinking Floorbooks
- Nurture through Nature (Strategies to connect very young children to nature, 0-5)
- Nurturing Boys: Closing the gap on underachieving boys

## **Nurturing Boys: Closing the gap in our underachieving boys**

Why do boys feel the need to create weapons, look for challenge and risk and how can we support this need in a motivational learning environment? This course will explore how to create positive learning spaces that enable boys and kinaesthetic children to thrive both indoors and outdoors. It is designed to look at current research and strategies to support boys' sense of identity and wellbeing and to extend their shared sustained thinking.

## **Talking and Thinking Floorbooks: Documenting the learning journey**

This inspirational training course examines the place of consultation in the early years and primary sector and how it can impact upon the planning process and educationalists' practice. It is designed to look at the way we involve our children from the age of 0 to 12 years in planning their learning linked to the curriculum. The course will include the motivational strategies developed by Claire Warden, International Educational Consultant, to promote effective communication and the recording through Talking and Thinking Floorbooks™, Talking Tubs™ and 3-dimensional Mind-Mapping.

## **Nurture through Nature**

This course explores children's innate connection to nature from a very young age. We explore how we can use the elements (water, earth, air, and fire) to create environments, schema and the development of life skills as a tool for planning very young children's learning experiences. The course will also look at the value and opportunities to promote play.

**Duration: 1 Day**

**Cost: Per Person Fee: £130. Group booking discount available**



*We created Ignite Unlocking Potential with the purpose...  
"to inspire and unlock the potential of every child".*

# Health, Wellbeing, Resilience & Physical Literacy programmes in the Outdoor's

The Outdoor classroom is the perfect environment to enhance the wellbeing, health and physical literacy of children & young people. At **Ignite Unlocking Potential** can help you ensure that you are capitalising on the unique physical, social and emotional development that nature and the outdoors can provide for children through the following programmes themes:

- Social & Emotional development
- Wellbeing & Resilience
- Physical literacy
- Confidence building

We have a range of expertise and resources to provide a number of programs in your school or organisation which can provide direct teaching and enrichment for children whilst also acting as a support mechanism for your staff. Our programmes can be tailored to achieve a range of awards and qualifications to ensure the very best training delivery whether its simply for the joy of learning or seeking 'hard outcomes' through certifications and qualifications.

**Return on your investment:** We use a number of qualitative tools & methods to generate distance travel reports and evaluations.



We created Ignite Unlocking Potential with the purpose...  
"to inspire and unlock the potential of every child".



# Forest School Sessions

Our Forest School Leader Tutor will come in and assess the needs of the school, including the ground facilities and deliver a minimum 8 week programme to get your Forest School off the ground.

In collaboration with teachers and support staff, a rolling programme of half-class forest school delivery will prepare your children and staff to embed Forest School into your specified year groups and allow you to sustain the benefits of play and learning outside of the classroom. with future discounted training with us.

## Features

- Full site inspection and risk assessment of grounds
  - Collaboration with teachers to link themes/topics to forest school sessions.
  - Single or mixed year group/stage.
  - 15:1 ratio to enable children to undertake an appropriate level of challenge.
- term.

**Cost:**        **£150 per day**

**Duration:** **1 day per week (8+ week program)**

The best way Primary Schools have used this package is when they have decided on staff gaining their formal Forest School qualification and supported that training with our Tutor to mentor them as they complete the training and portfolio,.This provides that immediate impetus to get Forest School of the ground.This blend of formal training and practitioner delivery supported by post programme mentoring is a proven means of embedding outdoor learning philosophy and practice for the long.

**5% discount** on accredited Forest School Training or INSET for staff with us if you have already purchased a Forest School programme.

Welsh medium programmes are also available.

*"The practitioner support has allowed us to get forest schools off the ground and to have a real impact"*

# John Muir Awards

This innovative outdoor learning programme follows the life of John Muir the father of ecology and the National parks movement.

Our programme is flexible enough to meet your specific school requirements, within the framework and criteria to satisfy key outdoor education curriculum requirements, whilst also delivering a nationally recognised award.

The award scheme is progressive and has 3 tiers to the award:

1. Discovery Level (40 hours / 9 day programme)
2. Explorer Award (80 hours / 18 day programme)
3. Conserver (120 hours / 27 day programme)

Suitable for children, young adults & families our programs begin with our Outdoor Learning Tutor coming in and finding out what the children want to learn and what interests them. This culminates with the children planning and leading a lesson delivered to their parents, peers or via our floor book learning journal approach that showcases the knowledge, skills & behaviours they have learned throughout their John Muir Award Journey.

This program is child-led and a great way to showcase a centres pupil voice strategy.

## Key features include:

Forest School activities

Literacy, Numeracy & STEM

Outdoor Education (orienteeing, map making etc).

Practical Conservation

**Cost: Discovery: £1,500 (max 15 children)**  
**£3,000 (max 30 children)**



We created Ignite Unlocking Potential with the purpose...  
"to inspire and unlock the potential of every child".

# Navigation and Orienteering

## Young Navigator Star Award (YNSA)

The focus of the Young Navigator awards is to encourage exploration and journeying in local areas using simple maps such as street maps, pictorial park maps and orienteering maps. There is a gradual learning progression via One Star (bronze), Two Star (silver) and Three Star (gold) levels with certificates and badges available for achieving candidates.

The Young Navigator Star courses are fantastic for children to actively learn outside the classroom with the Gold level often used as a lead-in for the Duke of Edinburgh Bronze award.

The YNSA is a tiered award scheme:

- **One Star (Bronze) 1 day**
- **Two Star (Silver) 2 day**
- **Three Star (Gold) 3 day**

**Cost: : £200 per day +£5 p/p accreditation**

## National Navigation Award Scheme (Young adults 14+)

The National Navigation Award Scheme (NNAS) is a personal performance, non-competitive, incentive scheme for all ages to learn navigation skills and gain confidence to get out and enjoy the countryside.

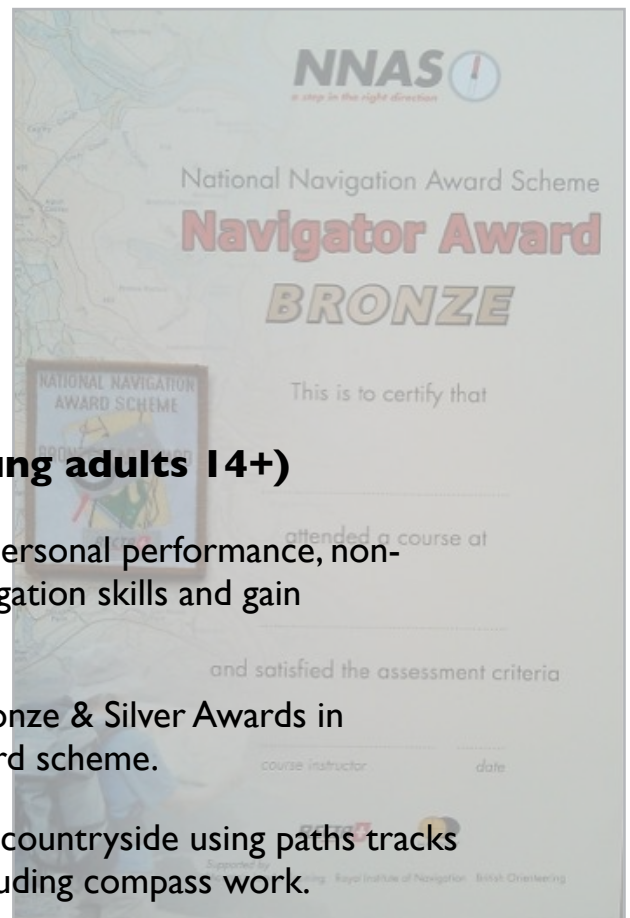
We are registered with NNAS as a provider of the Bronze & Silver Awards in addition to all levels of the Young Navigator's Star Award scheme.

**Bronze NNAS Award** (2 days)– Navigation in the countryside using paths tracks and other linear features, basic map interpretation including compass work.

**Silver NNAS Award** (2 days) – Navigation in the countryside using skills acquired at bronze level and adding skills required to navigate to features and places some distance from paths and tracks, accurate compass work is required and an ability to use appropriate navigational techniques to go across country.

**Cost: : Bronze: £90 p/p      Silver: £120 p/p**

**Purchase both levels with us and save money!!!! £200 p/p**



*We created Ignite Unlocking Potential with the purpose...  
"to inspire and unlock the potential of every child".*





**Our Bike Club project is a member of the National Bike Club Initiative that aims ‘to get more people cycling more often’.**

Our Mountain Bike & Cycling programmes are centred on young people, basing everything on their needs and interests. Cycling can give young people freedom, independence, a practical (and environmentally friendly) means of transportation, improved health and well-being, a sense of adventure and lots of fun. Our programmes are designed to be safe, sustainable and can be a means of engaging young people through opening up new learning opportunities.

Cycling can easily be linked to a whole range of educational and other priorities and initiatives: the national curriculum, Healthy Schools, environmental sustainability, Community Focused Schools developments, the 7 Core Aims of Rights to Action (through Children and Young People's Plans), Extending Entitlement, the National Youth Service Strategy for Wales and Cymry Ifanc – Supporting Young People aged 11–25 in Wales.

Our Bike Club can focus on Trails, roads or a mixture of both. We also include basic repairs, cleaning and navigation skills into our programmes.

The National cycling standards are progressive and are delivered at:

Level 1: Undertaken in a traffic free environment.

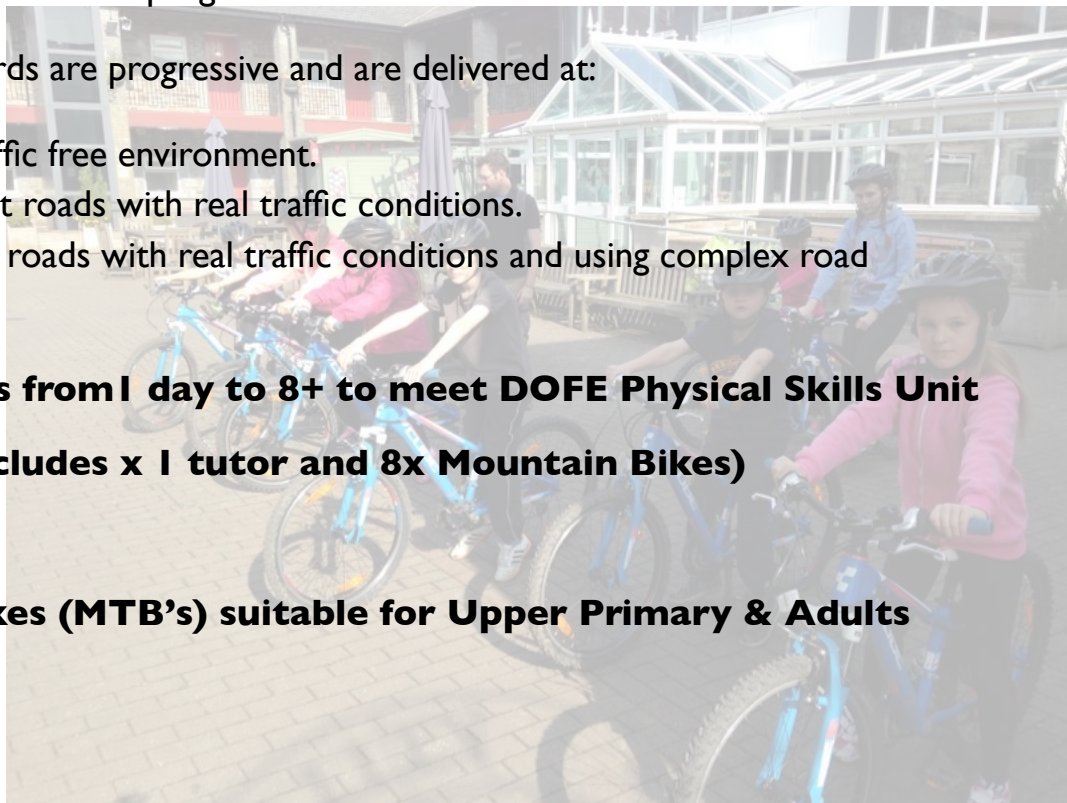
Level 2: Undertaken on quiet roads with real traffic conditions.

Level 3: undertaken on busy roads with real traffic conditions and using complex road features.

**Duration: Programmes from 1 day to 8+ to meet DOFE Physical Skills Unit**

**Cost: £250 per day (includes x 1 tutor and 8x Mountain Bikes)**

**We have Mountain Bikes (MTB's) suitable for Upper Primary & Adults**



*We created Ignite Unlocking Potential with the purpose...  
"to inspire and unlock the potential of every child".*





## Holiday Provision: Adventure Camp

Adventure camp is for 7-13 year olds to experience a unique, fun and different type of holiday provision and camp. Open to boys and girls of all abilities, we will provide an exciting and engaging programme for every type of young adventurer!

Example adventure activities include: Woodwork & crafts with bushcraft tools, Fire lighting, Den building, Nature Arts & Crafts, Team building challenges, Orienteering, Cooking on a campfire and old skull favourites such as making tree swings.

Our qualified tutors will ensure that your child leaves camp, happy, excited and enthused about outdoor activities. Your child does not have to be sporty to enjoy our Adventure camp.

Available during school half term holidays or weekends at school or our woodland.

**Cost:** £20 per child p/day

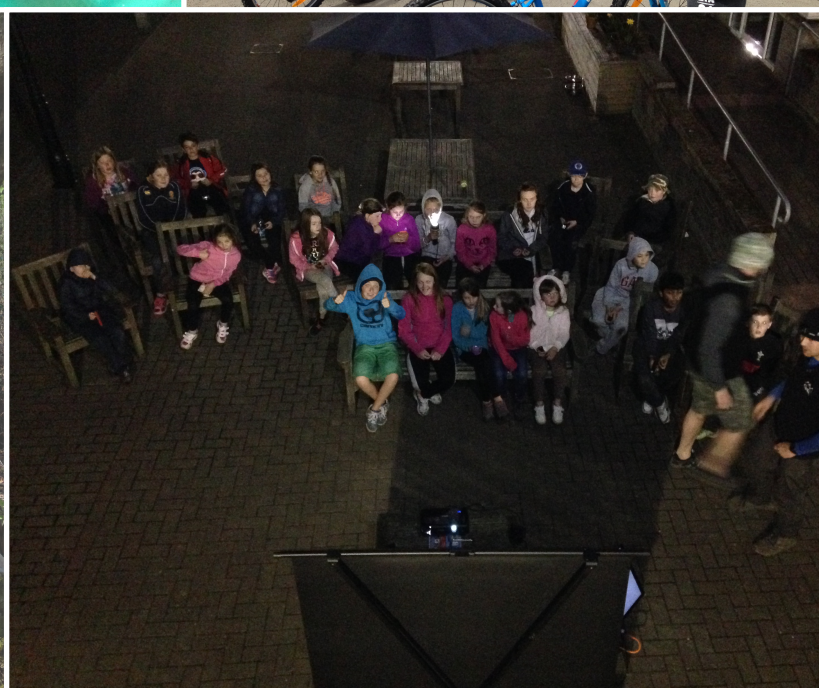
*"A rich learning experience for our children"*



# Residential Options

Whether your residential incorporates the John Muir Award or not, we guarantee a unique and fun learning experience for your child with our range of tailored 1 - 5 night residential, mid-week or weekend at our Tepee City!

Rather than simply tell you how good our experience is, we would rather let you judge for yourself.







- **The option to stay at the hotel or get the full Glamping Experience**
- **Your staff can stay, but they don't have to...we maintain 10:1 ratios of qualified tutors : child**
- **All equipment supplied: Bikes, tents, mats etc.**

***“This has been one the best experiences my daughter has had through her school”***



***The leaders were so supportive and encouraging***



# Bushcraft

Bush craft and survival skills training with **Ignite Unlocking Potential** will develop the key skills and knowledge to establish a safe camp, construct a variety of shelters and gain an understanding of the skills needed to survive the wilderness.

Undertaking Bush Craft & Survival Skills develop a sense of respect for the environment, with our participants learning how to 'leave no trace' of their activity whilst developing a sound knowledge of key survival skills and techniques.

Programmes can be tailored or bespoke to suit the client's needs.

We can also deliver our Bush craft programmes as an introduction, intermediate or advanced program and can include overnight experiences where clients have the opportunity to test their skills and shelters!

This is a perfect activity to promote confidence and self-esteem and what better way to develop team building and leadership skills than learning how to survive in the wild.

**Cost:** From £150 per day (1 day introduction) +£50 for overnight with meals



*We created Ignite Unlocking Potential with the purpose...  
"to inspire and unlock the potential of every child".*

# Archery

**Ignite Unlocking Potential** Instructors are Grand National Archery Society (GNAS) & Archery GB qualified. GNAS/ Archery GB are the only professional body for Archery recognised by the Adventure Activities Licensing Authority (AALA).

Our archery programs use all safety observances and rules, use alternative range layouts with regard to public and participant safety and teach participants how to hit the target consistently at up to 20 yards using basic Bare-Bow & Freestyle methods. Our programmes provide a sociable experience and balance both coaching to develop skills, good posture and technique with a fun and challenging experience through games and mini competitions.

Our Archery range is set deep within our woods amongst a beautiful and natural landscape which makes our programs exciting and unique.

**Cost:** £200 per day (includes tutor, & equipment)



We created Ignite Unlocking Potential with the purpose...  
"to inspire and unlock the potential of every child".



## Level 2 Award in Food Safety in Catering (Outdoors)

### **Suitable for:**

Forest School Leaders, DofE Leaders, Children's workers, Scouts, Guides, Play workers, voluntary helpers, food handlers

This training would be good for you if cooking outdoors as you have the responsibility to keep children, young people and adults safe. The qualification is designed to give an appreciation of good hygiene practice.

There is emphasis on the 4 Cs (chilling, cooking, cleaning, contamination). Monitoring controls, corrective actions and methods of reporting are examined as part of a food safety management system. It is aimed at those of you who perform a varied food handler's role with some guidance and supervision.

The aim of the day is to combine the theory of food safety with the practical skills of cooking a 3 course lunch in the outdoors developing good practice guidelines in an enjoyable & interactive manner.

### **Topics include:**

- Importance of Food Safety in the woods incorporating HACCP
- Microbes – Where are they “lurking”?
- Illnesses linked to food and the outdoors
- Personal Hygiene
- Food Safety Control – planning a HACCP relevant to your practice.

**Cost:** £60 p/p

We are also run cookery programmes both indoor & outdoors.



We created Ignite Unlocking Potential with the purpose...  
"to inspire and unlock the potential of every child".



## First Aid Qualifications

Ignite Unlocking Potential is an approved trained with both ITC & QNUK who are awarding bodies accrediting QCF qualifications regulated by Ofqual & SQA. We are able to offer a number of First Aid qualifications and First Aid certifications for workplace compliance. These include:

### **Emergency First Aid At Work (EFAW)**

- Duration: 1 day
- Ratio: 1:12
- Cost: £45 p/p

### **First Aid at Work (FAW)**

- Duration: 1 day
- Ratio: 1:12
- Cost: £140 p/p

### **Paediatric First Aid (PFA): 2 day**

- Duration: 1 day
- Ratio: 1:12
- Cost: £120 p/p

### **Outdoor First Aid (OFA): 2 day**

- Duration: 1 day
- Ratio: 1:12
- Cost: £120 p/p

### **Forest School First Aid (FSFA): 2 day**

- Duration: 1 day
- Ratio: 1:12
- Cost: £120 p/p

Combined courses such as Forest School First Aid with Paediatric First Aid to cater for Foundation Phase and Outdoor Nurseries. are available at request.

We are also run first aid programmes for after school clubs for Primary (certificate only) and Secondary (accredited to EFAW).

*We created Ignite Unlocking Potential with the purpose...  
"to inspire and unlock the potential of every child".*





## Ladybirds Nature Based Parent & Toddler Group

A truly unique LadyBird Parent & Toddler Group. Come and join us in our woodland area set in the beautiful Dare Valley Country Park and experience something different with your little one.

Our nature Parent Toddler Group will harness all the benefits of nature and the outdoors to provide your child with a rich and healthy pre-school experience, designed to develop your child physically, emotionally, and mentally. Children are able to explore nature in depth which in turn can have significant impacts on their confidence, communication skills and happiness.

This group is about you as a parent with your child interacting with nature. We create structures for play but encourage you to let your child go where their interest takes them.

What can I expect from attending Ladybirds?

- Parental interaction
- Learning through play
- Social interaction
- Speech, Language & Physical development
- Story telling
- Adventures
- Buttery Campfire toast!!!!

Would you like to set up your very own Ladybirds or work in partnership to bring Ladybirds to your area? We can offer tailored training & ongoing support to bring the joy of outdoor play to your children.

**For further information on Ladybirds please visit our website:**

**<http://igniteup.co.uk/ladybirds-parent-toddler/>**

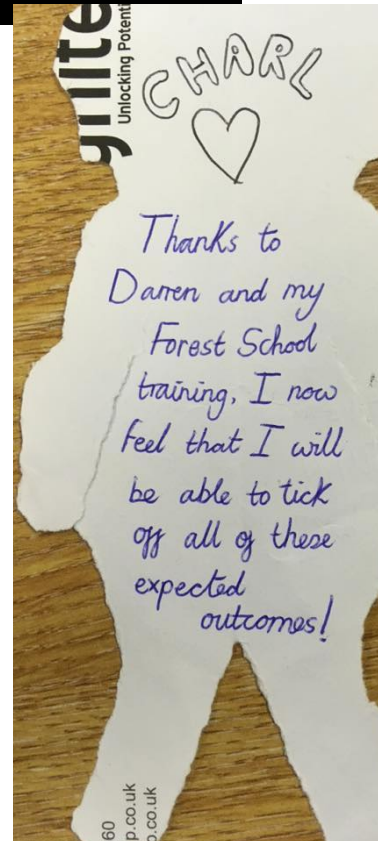
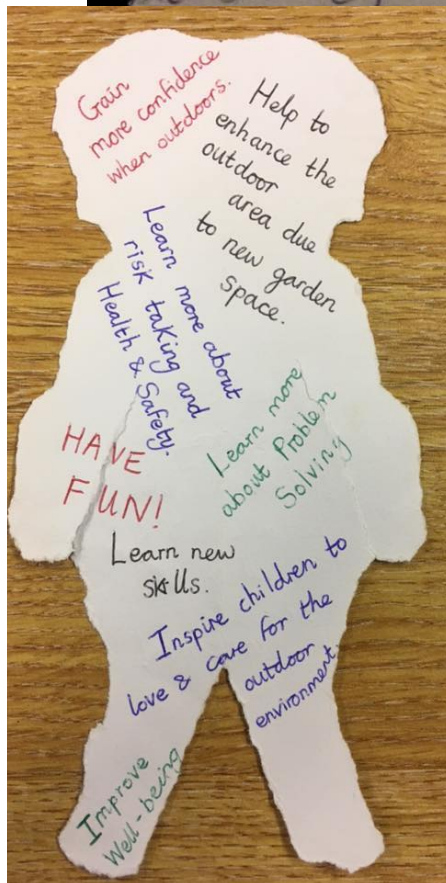
*We created Ignite Unlocking Potential with the purpose...  
"to inspire and unlock the potential of every child".*



Do you have suggestions for how we can improve?  
Are there any other qualifications that you wish TTC to develop?

Please add any comments here

This was by far the best first aid course i have attended, the venue was great, staff were friendly and approachable and the course was generally very informative, well structured and thorough. A great two days, thank you for accomodating me at the last minute. I would love to hear more about the Basic Expedition leader training in 2015.  
Many thanks



Your feedback will help us to continue to improve our training

How was the camp organised from your view?

Excellent

What are the strengths of the camp from your view?

The camp gives children confidence, my daughter loved all aspects of it, played everything, particularly the design camp.

Are there any improvements you would like to suggest?

none all aspects were excellent.

**Visit our website  
for more feedback  
from our customers**  
[http://  
igniteup.co.uk/  
what-people-say-  
about-us/](http://igniteup.co.uk/what-people-say-about-us/)

We created Ignite Unlocking Potential with the purpose...  
"to inspire and unlock the potential of every child".



**Contact us:**

Darren Lewis,  
Ignite Unlocking Potential

T: 07903249789

E: [info@igniteup.co.uk](mailto:info@igniteup.co.uk)

W: [igniteup.co.uk](http://igniteup.co.uk)



Unlocking Potential

@Ignite\_up



We created Ignite Unlocking Potential with the purpose...  
"to inspire and unlock the potential of every child".